


+ GBF

2-WAY HIGH PRESSURE BALL VALVES




CARBON STEEL

- Type: ball valve GB 2 way 
- Body: round
- Material: 1,0570/1,0737
- Ball seats: from DN32 up to DN50
- O-Rings: NBR, FKM, EPDM, MVQ
- Operating pressure: S3000 (210 bar), S6000 (350 bar) depending on valve size and seal materials selected
- Temp range: -20°C to +100°C depending on seal material selected

| GB | F3 | DN32 | 2 | 2 | 1 | 1 | A | B |
|-----------------------------------|--|---|---------------------------|------------------------------|---------------------------|---------------------------|---|---|
| Type and way of valve GB 2-way | Valves dimension of pressure (psi) F3 F6 S3000 S6000 | Nominal dimension DN32 DN40 DN50 | Body material 2 1,0570 | Adapter material 2 1,0570 | Stem material 1 1,0737 | Ball material 1 1,0737 | Ball seat material A POM D PEEK G PA612 K GEMPTFE C PTFE | Adapter and stem seal material B NBR E FKM F EPDM L MVQ |

STAINLESS STEEL

- Type: ball valve GB 2 way 
- Body: round
- Material: 1,4404/1,4404
- Ball seats: from DN32 up to DN50
- O-Rings: NBR, FKM, EPDM, MVQ
- Operating pressure: S3000 (210 bar), S6000 (350 bar) depending on valve size and seal materials selected
- Temp range: -30°C to +100°C different temperatures on request

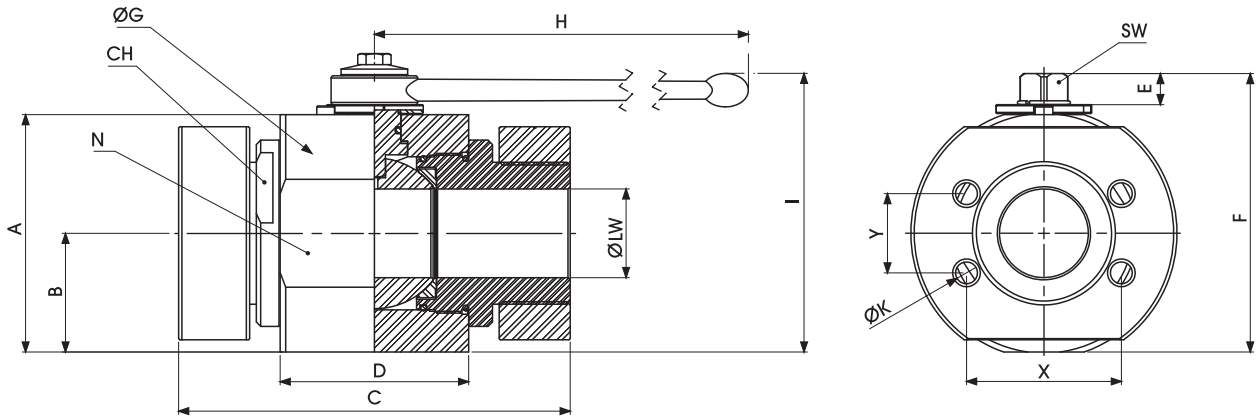
| GB | F3 | DN32 | 4 | 4 | 4 | 4 | A | B |
|-----------------------------------|--|---|---------------------------|------------------------------|---------------------------|---------------------------|---|---|
| Type and way of valve GB 2-way | Valves dimension of pressure (psi) F3 F6 S3000 S6000 | Nominal dimension DN32 DN40 DN50 | Body material 4 1,4404 | Adapter material 4 1,4404 | Stem material 4 1,4404 | Ball material 4 1,4404 | Ball seat material A POM D PEEK G PA612 K GEMPTFE C PTFE | Adapter and stem seal material B NBR E FKM F EPDM L MVQ |





2-WAY HIGH PRESSURE BALL VALVES

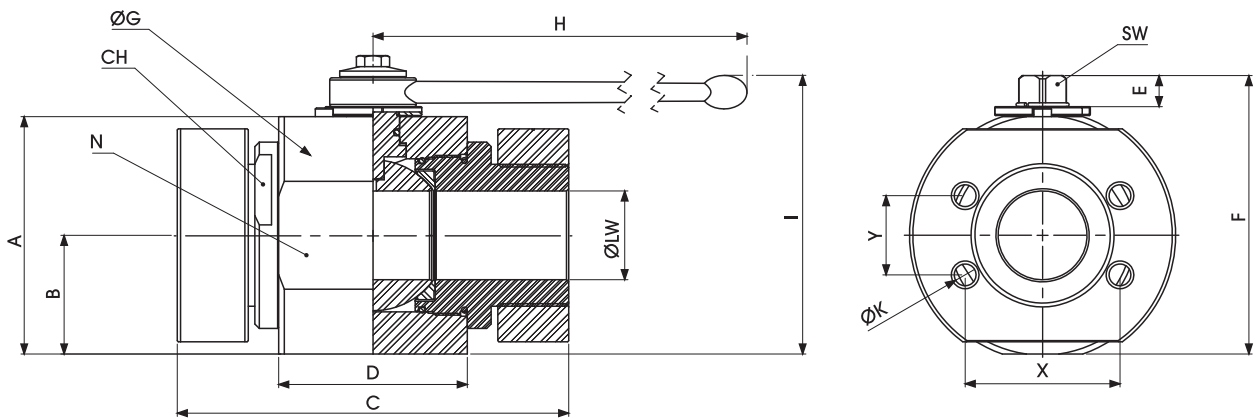
Specialist in Ball Valves



GBF SAE J518 S3000

Standard

| TYPE | PN | DN | A | B | C | D | E | F | ØG | H | I | N | X | Y | ØK | CH | SW | ØLW | KG | CARBON STEEL | STAINLESS STEEL |
|------|----------|----|-----|------|-------|----|------|-------|-----|-----|-------|-----|------|------|-----|----|----|-----|--------|-----------------|-----------------|
| | | | | | | | | | | | | | | | | | | | | ITEM CODE | ITEM CODE |
| GBF3 | 4000 Psi | 32 | 93 | 46,5 | 172 | 75 | 13,5 | 111,5 | 98 | 300 | 120,5 | 88 | 58,7 | 30,2 | M10 | 60 | 17 | 32 | 8,102 | GB2FFC3L021A000 | GB2FFC3L044A000 |
| GBF3 | 3000 Psi | 40 | 107 | 53,5 | 176,5 | 85 | 13,5 | 125,5 | 113 | 300 | 134,5 | 102 | 69,8 | 35,7 | M12 | 75 | 17 | 40 | 11,142 | GB2FFC4L021A000 | GB2FFC4L044A000 |
| GBF3 | 3000 Psi | 50 | 114 | 57 | 196 | 98 | 13,5 | 132,5 | 123 | 300 | 141,5 | 118 | 77,8 | 42,9 | M12 | 85 | 17 | 50 | 15,343 | GB2FFC5L021A000 | GB2FFC5L044A000 |



GBF SAE J518 S3000 UNC

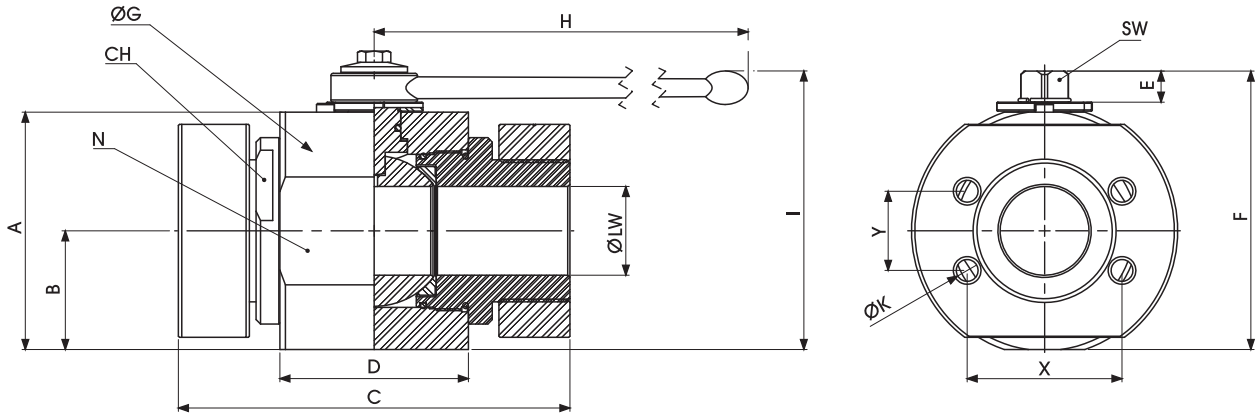
Standard

| TYPE | PN | DN | A | B | C | D | E | F | ØG | H | I | N | X | Y | ØK | CH | SW | ØLW | KG | CARBON STEEL | STAINLESS STEEL |
|------|----------|----|-----|------|-------|----|------|-------|-----|-----|-------|-----|------|------|-------------|----|----|-----|--------|-----------------|-----------------|
| | | | | | | | | | | | | | | | | | | | | ITEM CODE | ITEM CODE |
| GBF3 | 4000 Psi | 32 | 93 | 46,5 | 172 | 75 | 13,5 | 111,5 | 98 | 300 | 120,5 | 88 | 58,7 | 30,2 | 7/16-14 UNC | 60 | 17 | 32 | 8,102 | GB2FUC3L021A000 | GB2FUC3L044A000 |
| GBF3 | 3000 Psi | 40 | 107 | 53,5 | 176,5 | 85 | 13,5 | 125,5 | 113 | 300 | 134,5 | 102 | 69,8 | 35,7 | 1/2-13 UNC | 75 | 17 | 40 | 11,142 | GB2FUC4L021A000 | GB2FUC4L044A000 |
| GBF3 | 3000 Psi | 50 | 114 | 57 | 196 | 98 | 13,5 | 132,5 | 123 | 300 | 141,5 | 118 | 77,8 | 42,9 | 1/2-13 UNC | 85 | 17 | 50 | 15,343 | GB2FUC5L021A000 | GB2FUC5L044A000 |

+ GBF

2-WAY HIGH PRESSURE BALL VALVES

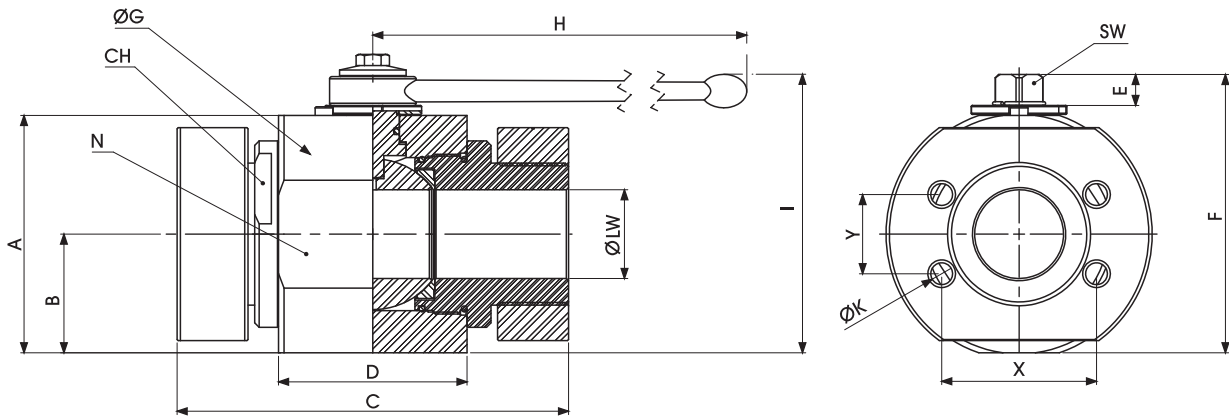
www.gemels.it



GBF SAE J518 S6000

Standard

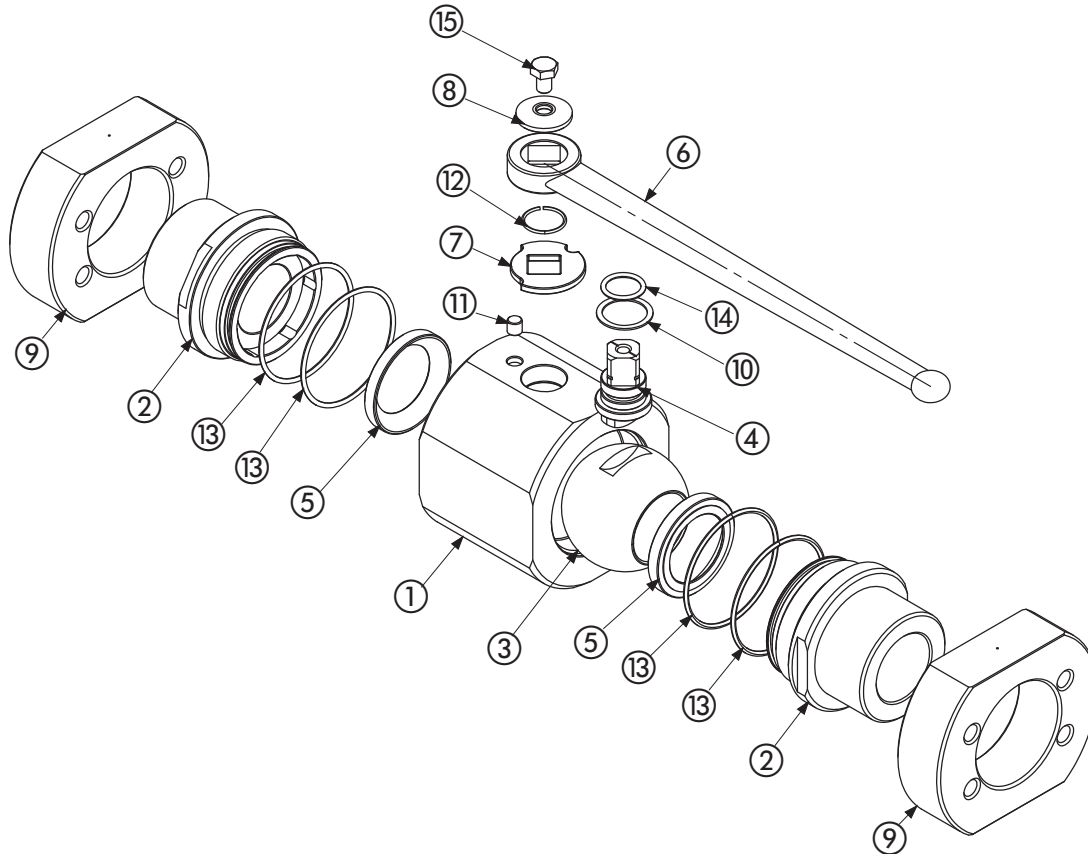
| TYPE | PN | DN | A | B | C | D | E | F | ØG | H | I | N | X | Y | ØK | CH | SW | ØLW | KG | CARBON STEEL | STAINLESS STEEL |
|------|----------|----|-----|------|-------|----|------|-------|-----|-----|-------|-----|------|------|-----|----|----|-----|--------|-----------------|-----------------|
| | | | | | | | | | | | | | | | | | | | | ITEM CODE | ITEM CODE |
| GBF6 | 5000 Psi | 32 | 93 | 46,5 | 172 | 75 | 13,5 | 111,5 | 98 | 300 | 120,5 | 88 | 66,7 | 31,8 | M12 | 60 | 17 | 32 | 8,102 | GB2FFC93021A000 | GB2FFC93044A000 |
| GBF6 | 5000 Psi | 40 | 107 | 53,5 | 176,5 | 85 | 13,5 | 125,5 | 113 | 300 | 134,5 | 102 | 79,4 | 36,5 | M16 | 75 | 17 | 40 | 11,142 | GB2FFCA3021A000 | GB2FFCA3044A000 |
| GBF6 | 5000 Psi | 50 | 114 | 57 | 196 | 98 | 13,5 | 132,5 | 123 | 300 | 141,5 | 118 | 96,8 | 44,5 | M20 | 80 | 17 | 50 | 15,343 | GB2FFCB3021A000 | GB2FFCB3044A000 |



GBF SAE J518 S6000 UNC

Standard

| TYPE | PN | DN | A | B | C | D | E | F | ØG | H | I | N | X | Y | ØK | CH | SW | ØLW | KG | CARBON STEEL | STAINLESS STEEL |
|------|----------|----|-----|------|-------|----|------|-------|-----|-----|-------|-----|------|------|------------|----|----|-----|--------|-----------------|-----------------|
| | | | | | | | | | | | | | | | | | | | | ITEM CODE | ITEM CODE |
| GBF6 | 5000 Psi | 32 | 93 | 46,5 | 172 | 75 | 13,5 | 111,5 | 98 | 300 | 120,5 | 88 | 66,7 | 31,8 | 1/2-13 UNC | 60 | 17 | 32 | 8,102 | GB2FUC93021A000 | GB2FUC93044A000 |
| GBF6 | 5000 Psi | 40 | 107 | 53,5 | 176,5 | 85 | 13,5 | 125,5 | 113 | 300 | 134,5 | 102 | 79,4 | 36,5 | 5/8-11 UNC | 75 | 17 | 40 | 11,142 | GB2FUCA3021A000 | GB2FUCA3044A000 |
| GBF6 | 5000 Psi | 50 | 114 | 57 | 196 | 98 | 13,5 | 132,5 | 123 | 300 | 141,5 | 118 | 96,8 | 44,5 | 3/4-10 UNC | 85 | 17 | 50 | 15,343 | GB2FUCB3021A000 | GB2FUCB3044A000 |



Carbon steel

| Pos | Description | Material | Q.tà |
|-----|----------------|-------------|------|
| 1 | Body | 1,0570 | 1 |
| 2 | Adapter | 1,0570 | 2 |
| 3 | Ball | 1,0737 | 1 |
| 4 | Stem | 1,0737 | 1 |
| 5 | Ball seat | POM | 2 |
| 6 | Handle | 1,0116 | 1 |
| 7 | Washer | 1,0116 | 1 |
| 8 | Washer | 1,0737 | 1 |
| 9 | Flange | 1,0570 | 2 |
| 10 | Stem ring | POM | 1 |
| 11 | Spine | 1,0737 | 1 |
| 12 | Seeger | 1,4301 | 1 |
| 13 | Adapter o-ring | NBR | 4 |
| 14 | Stem o-ring | NBR | 1 |
| 15 | Screw | ISO4017 8.8 | 1 |

- On request**
- Reduced bore
 - O-Ring in FKM, EPDM, HNBR, KALREZ
 - Seals in PTFE, PEEK, PA612, GEMPTFE, METAL TO METAL
 - Special threads
 - Stem in stainless steel 1,4404
 - Ball in stainless steel 1,4404
 - Pressure class up to PN5000 Psi
 - Pneumatic and electrical actuator
 - Locking device

For further special requests please consult our technical/commercial service

Stainless steel

| Pos | Description | Material | Q.tà |
|-----|----------------|------------|------|
| 1 | Body | 1,4044 | 1 |
| 2 | Adapter | 1,4044 | 2 |
| 3 | Ball | 1,4044 | 1 |
| 4 | Stem | 1,4301 | 1 |
| 5 | Ball seat | POM | 2 |
| 6 | Handle | 1,4301 | 1 |
| 7 | Washer | 1,4301 | 1 |
| 8 | Washer | 1,4301 | 1 |
| 9 | Flange | 1,4044 | 2 |
| 10 | Stem ring | POM | 1 |
| 11 | Spine | 1,4301 | 1 |
| 12 | Seeger | 1,4301 | 1 |
| 13 | Adapter o-ring | NBR | 4 |
| 14 | Stem o-ring | NBR | 1 |
| 15 | Screw | ISO4017 A2 | 1 |

- On request**
- Reduced bore
 - O-Ring in FKM, EPDM, HNBR, KALREZ
 - Seals in PTFE, PEEK, PA612, GEMPTFE, METAL TO METAL
 - Special threads
 - Pressure class up to PN5000 Psi
 - Pneumatic and electrical actuator
 - Locking device